

Bass

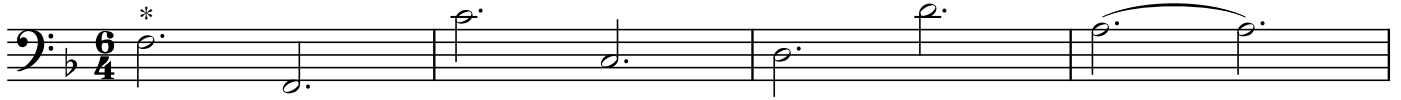
Reflection upon 'Greensleeves to a Ground'

Original: from The Division Flute (Anon.) - Treble Rec. and Basso Continuo

Harmonic Reflection: Viola da Gamba and Keyboard

Ground Bass for Original

Arr. P.J.Perry



* Play D in var. 4, 6, 7, 8, 10, 13 and 14.



Reflection: 'Greensleeves to a Ground' (Harmonic Inversion)

(ratios of frequency converted to ratios of wavelength)

Keyboard and Viola da Gamba



Bass

23

4.

27

30

5.

34

37

41

6.

44

47

7.

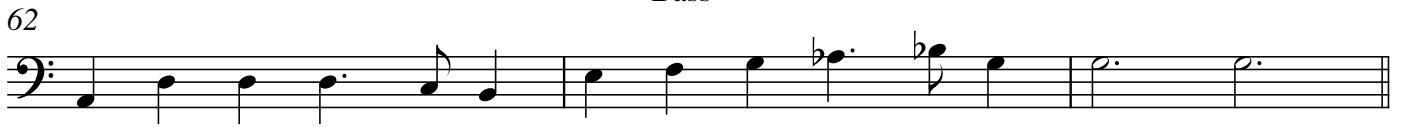
51

55

8.

59

62



65

9.



67

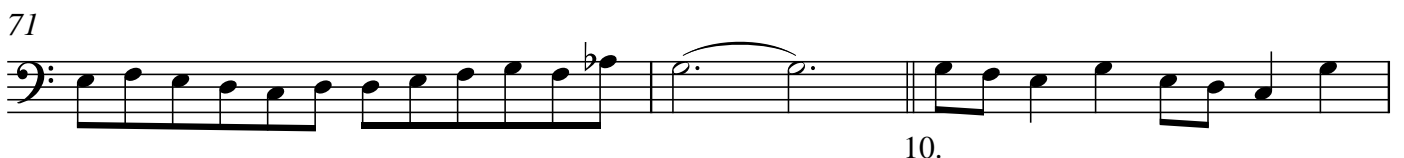


69



71

10.



74

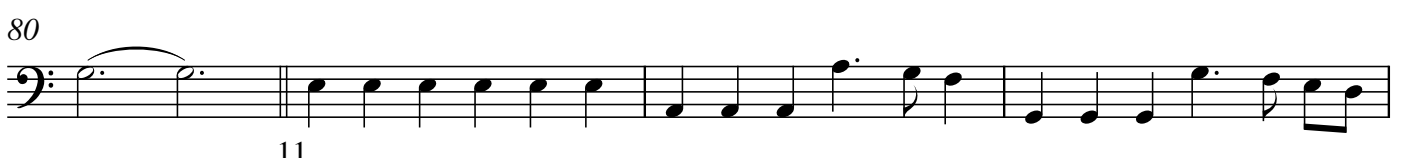


77



80

11.



84



87

12.



90



Bass

92



Musical staff for measure 92, bass clef, featuring a sequence of eighth notes and quarter notes.

94



Musical staff for measure 94, bass clef, featuring a sequence of eighth notes and quarter notes, ending with a half note.

97



Musical staff for measure 97, bass clef, featuring a sequence of eighth notes and quarter notes.

13.

100



Musical staff for measure 100, bass clef, featuring a sequence of eighth notes and quarter notes, including a flat sign.

103



Musical staff for measure 103, bass clef, featuring a sequence of eighth notes and quarter notes, including a double bar line and a flat sign.

14.

106



Musical staff for measure 106, bass clef, featuring a sequence of eighth notes and quarter notes, including a flat sign.

109



Musical staff for measure 109, bass clef, featuring a sequence of eighth notes and quarter notes, including a flat sign.

113



Musical staff for measure 113, bass clef, featuring a sequence of eighth notes and quarter notes.

15.

116



Musical staff for measure 116, bass clef, featuring a sequence of eighth notes and quarter notes, including flat signs.

118



Musical staff for measure 118, bass clef, featuring a sequence of eighth notes and quarter notes, including flat signs and a half note.