

FOR
BASS RECORDER

Melodies of the British Isles

Miss Thompson's Hornpipe
Shrewsbury Lasses

Part 16

Rosebay Recorder Archive

Unaccompanied Solos

Arranged by P J Perry

Miss Thompson's Hornpipe

text by Elizabeth Siddal, 1829-1862.

Lively (♩=100)





A Lament

*Then harbour no smile on your bonny face
To win the deepest sigh
... you will stand alone, my dear,
When wintry winds draw nigh.*



67 **Largo, espressivo**

8
4

Oh — nev - er weep, weep — for love that's dead, Since —

73

love — is — sel - dom true

79

85

The fair - - - est words — on tru - est

90

lips Pass — on — and — sure - ly — die,

96

Sweet, — nev - er weep —

101

for what can - not, — can - not be For —

106

this — God has not, has — not — giv - en:

112

If the mer - - - est dream — of

117

love — were, were true Then — sweet, — we should

123

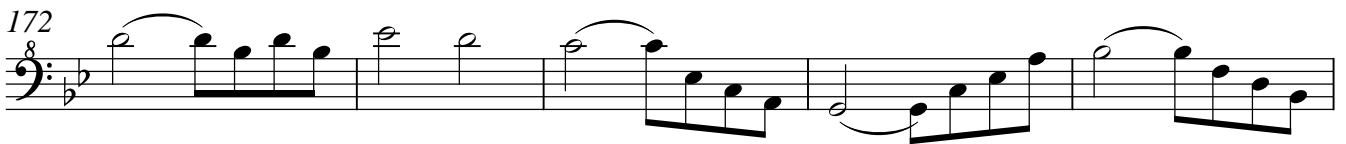
molto rall.

be — in — heav - en, Then sweet, — we should be — in heav - en.

*Love changes his fashion from blue to red,
From brightest red to blue,
And was born to an early death
And is so seldom true.*

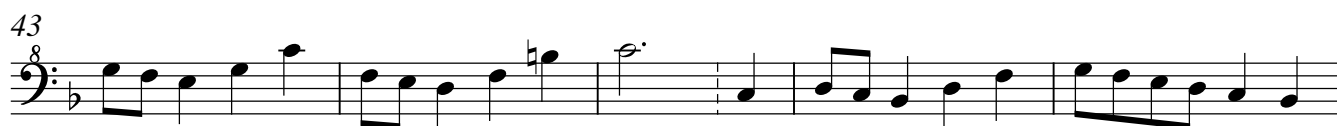
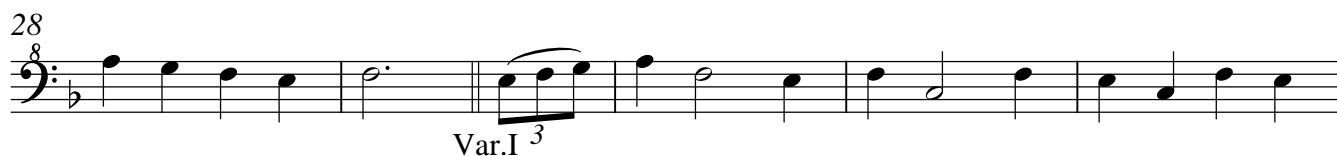
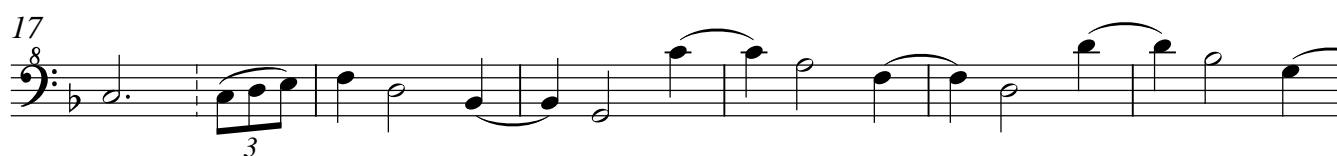
129 **Bleak & oblique**





Shrewsbury Lasses

Briskly





Var.II



Var.III





219



225



230



235



240



244



248



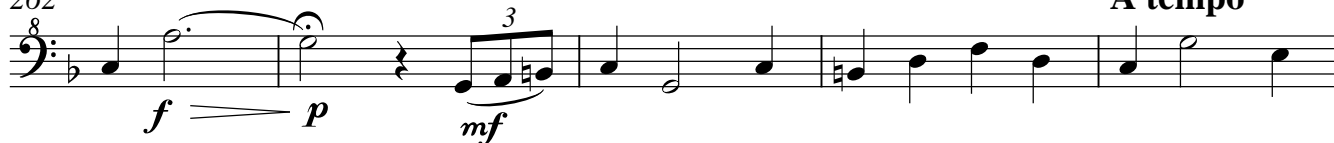
253



257

rit.**meno, molto allargando**

262

accel.**A tempo**

267

rall.