

The Lowest Trees Have Tops

John Dowland

Musical score for Bass Recorder, 4/4 time signature. The piece is in G major. It consists of five staves of music. The first staff begins with a first ending bracket over the first measure. The second staff starts at measure 7. The third staff starts at measure 13 and includes a repeat sign. The fourth staff starts at measure 19 and ends with a double bar line and repeat dots.

Sweet was the Song the Virgin Sung

William Ballet

Musical score for Bass Recorder, 4/4 time signature. The piece is in B-flat major. It consists of seven staves of music. The first staff begins with a first ending bracket over the first measure. The second staff starts at measure 6. The third staff starts at measure 11. The fourth staff starts at measure 16. The fifth staff starts at measure 21. The sixth staff starts at measure 26. The seventh staff starts at measure 29 and ends with a double bar line.

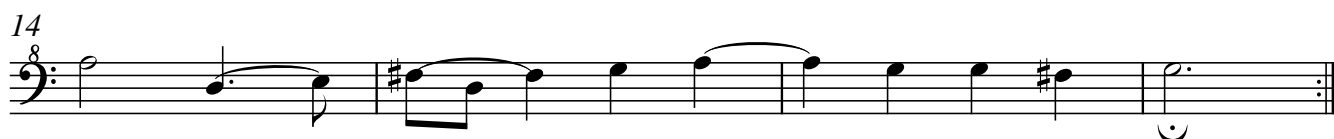
What is Beauty but a Breath

Thomas Ford



To His Sweet Lute

Thomas Campian



Jacke and Jone

Thomas Campian

1

7

12

Detailed description: This block contains the first three staves of the piece 'Jacke and Jone'. The first staff starts at measure 1, the second at measure 7, and the third at measure 12. The music is written in bass clef with a key signature of one sharp (F#) and a 4/4 time signature. It features a mix of eighth and sixteenth notes, with some rests and a repeat sign at the end of the third staff.

Leave Now Mine Eyes Lamenting

Thomas Morley

1

7

13

18

24

29

34

40

Detailed description: This block contains the musical notation for 'Leave Now Mine Eyes Lamenting', divided into eight staves. The first staff starts at measure 1 and includes a first ending bracket. The second staff starts at measure 7. The third staff starts at measure 13. The fourth staff starts at measure 18. The fifth staff starts at measure 24. The sixth staff starts at measure 29. The seventh staff starts at measure 34. The eighth staff starts at measure 40 and includes first and second ending brackets. The music is written in bass clef with a key signature of two flats (Bb, Eb) and a 4/4 time signature. It features a mix of eighth, sixteenth, and quarter notes, with rests and repeat signs.

In Nets of Golden Wyers

Thomas Morley



There is a Ladie Sweet and Kind

Thomas Ford

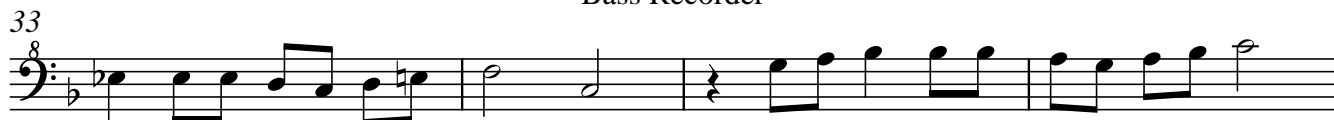
Musical notation for the piece 'There is a Ladie Sweet and Kind' by Thomas Ford. It consists of two staves of music in bass clef, 4/4 time, with a key signature of one flat (Bb). The first staff begins with a treble clef and a 2/4 time signature, indicating the first ending. The second staff begins with a measure rest and a '5' above it, indicating a second ending. The piece concludes with a double bar line and repeat dots.

O Thou That Art So Cruell

Thomas Morley

Musical notation for the piece 'O Thou That Art So Cruell' by Thomas Morley. It consists of seven staves of music in bass clef, 4/4 time, with a key signature of one flat (Bb). The first staff begins with a treble clef and a 4/4 time signature, indicating the first ending. The second staff begins with a measure rest and a '7' above it. The third staff begins with a measure rest and a '12' above it. The fourth staff begins with a measure rest and a '17' above it. The fifth staff begins with a measure rest and a '21' above it. The sixth staff begins with a measure rest and a '26' above it. The seventh staff begins with a measure rest and a '30' above it. The piece concludes with a double bar line and repeat dots.

Bass Recorder



I Should for Greife

Thomas Morley

