

Bowman's Country Dance

arr. P.J.Perry

(♩ = 120)

Theme

Musical notation for the Theme, measures 1-14. The piece is in bass clef, 4/4 time, and G major. It begins with a treble clef and a key signature of one sharp (F#). The tempo is marked as quarter note = 120. The melody consists of eighth and quarter notes, with some slurs and accents.

Var. I

Musical notation for Variation I, measures 1-12. The piece is in bass clef, 4/4 time, and G major. It begins with a treble clef and a key signature of one sharp (F#). The tempo is marked as quarter note = 120. The melody is similar to the theme but with some rhythmic and melodic variations.

Slower, with expression

Var. II

Musical notation for Variation II, measures 1-7. The piece is in bass clef, 4/4 time, and B-flat major. It begins with a treble clef and a key signature of two flats (B-flat and E-flat). The tempo is marked as quarter note = 120. The melody is slower and more expressive than the previous variations, featuring slurs and accents. It includes first and second endings.

2
10
13
16

Musical notation for the first piece, measures 2-16. The key signature is two flats (B-flat and E-flat), and the time signature is 8/8. The piece consists of six staves of music. The first staff starts with a repeat sign. The second staff has a fermata over the first measure. The third staff has first and second endings. The first ending is a half note, and the second ending is a quarter note.

Var. III **A tempo**

Musical notation for the second piece, measures 4-16. The key signature is two flats (B-flat and E-flat), and the time signature is 4/4. The piece consists of six staves of music. The first staff has a fermata over the first measure. The second staff has a fermata over the first measure. The third staff has a fermata over the first measure. The fourth staff has a fermata over the first measure. The fifth staff has a fermata over the first measure. The sixth staff has first and second endings. The first ending is a half note, and the second ending is a half note.

The Ash Grove

Theme **Flowing**

Musical notation for 'The Ash Grove' theme, measures 6-13. The key signature is two flats (B-flat and E-flat), and the time signature is 3/4. The piece consists of three staves of music. The first staff has a fermata over the first measure. The second staff has a fermata over the first measure. The third staff has a fermata over the first measure.

20

Var.

5

11

16

21

All in the Garden Green

1 (♩ = 96)

Theme

7

13

Var. I ¹

6

12

16

Var. II ¹

5

10

15

Portsmouth

Quick

Theme

5

11

Gently, Swaying

Var. I

5

11

A tempo

Var. II

4

8

12

Early One Morning

Theme

1 (♩ = 100)

8

Var. I

6

6 12



Var. II



7



15



20



Var. III



5



11



16



The Curly Headed Ploughboy

Vigorously

Theme



4



10

14

Var. I

4

9

14

Var. II

3

7

12

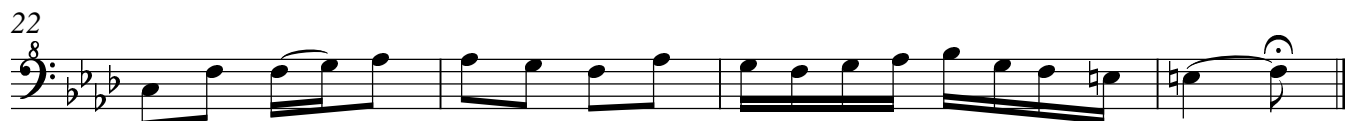
15

Blow Away the Morning Dew

Lively



Slower, with feeling



Andante



5

10

15

19

23

The Pleasures of the Town

Brisk and boisterous

Theme

5

11

Var. I

6

11

10
16



21

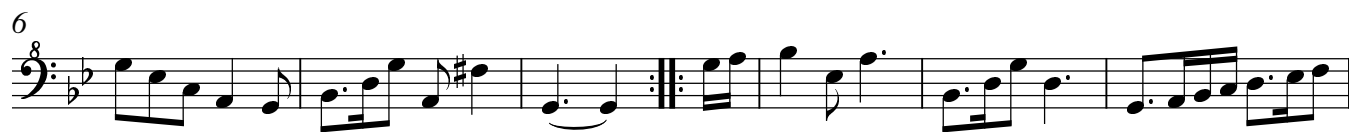


Slow, stately

Var. II



6



12



18

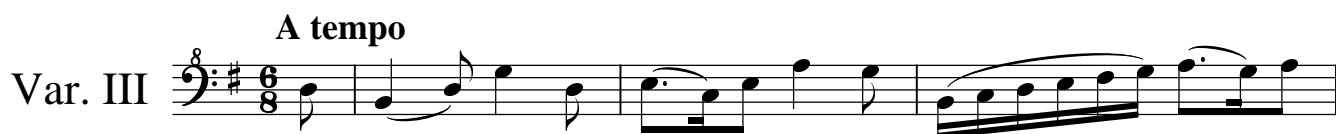


22



A tempo

Var. III



4



8



12

